

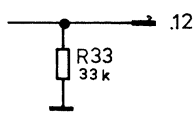
11

12

13

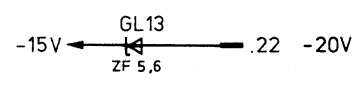
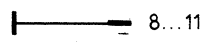
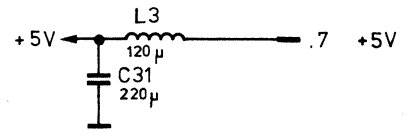
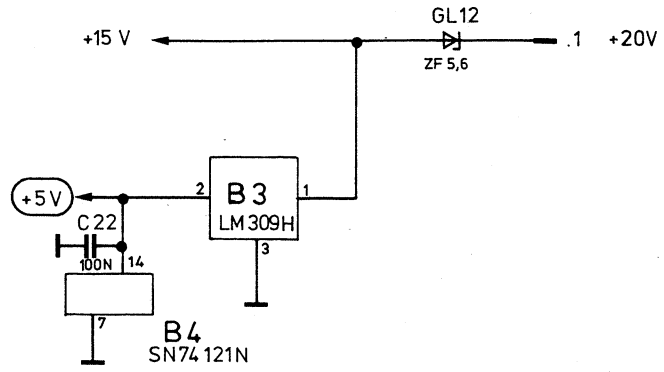
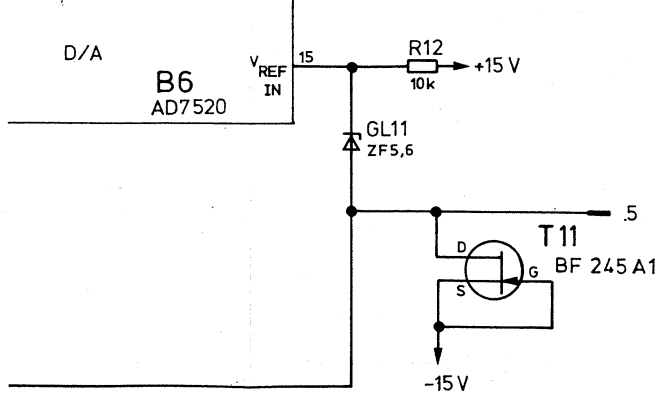
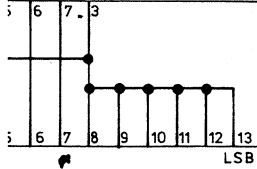
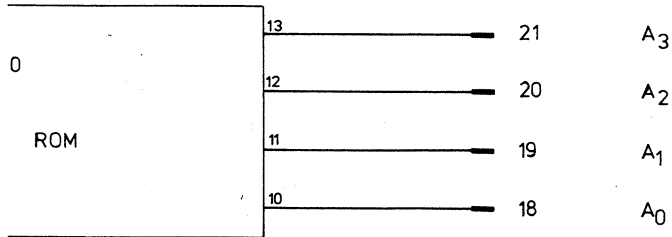
14

15

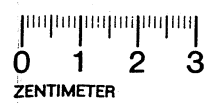


T10
CY59 IX

Leistungsumschaltung
Power Switchover



Alle Steckkontakte enthalten in ST 30
All contact pins contained in ST 30



| | | | | |
|--|---------------------------------------|--|-------------------------|------------|
| | Stromlauf zu Verstimmbarem Oszillator | | Zeichn. Nr.: 292.0510 S | |
| | VCO | | Z | 292.0010 V |

11

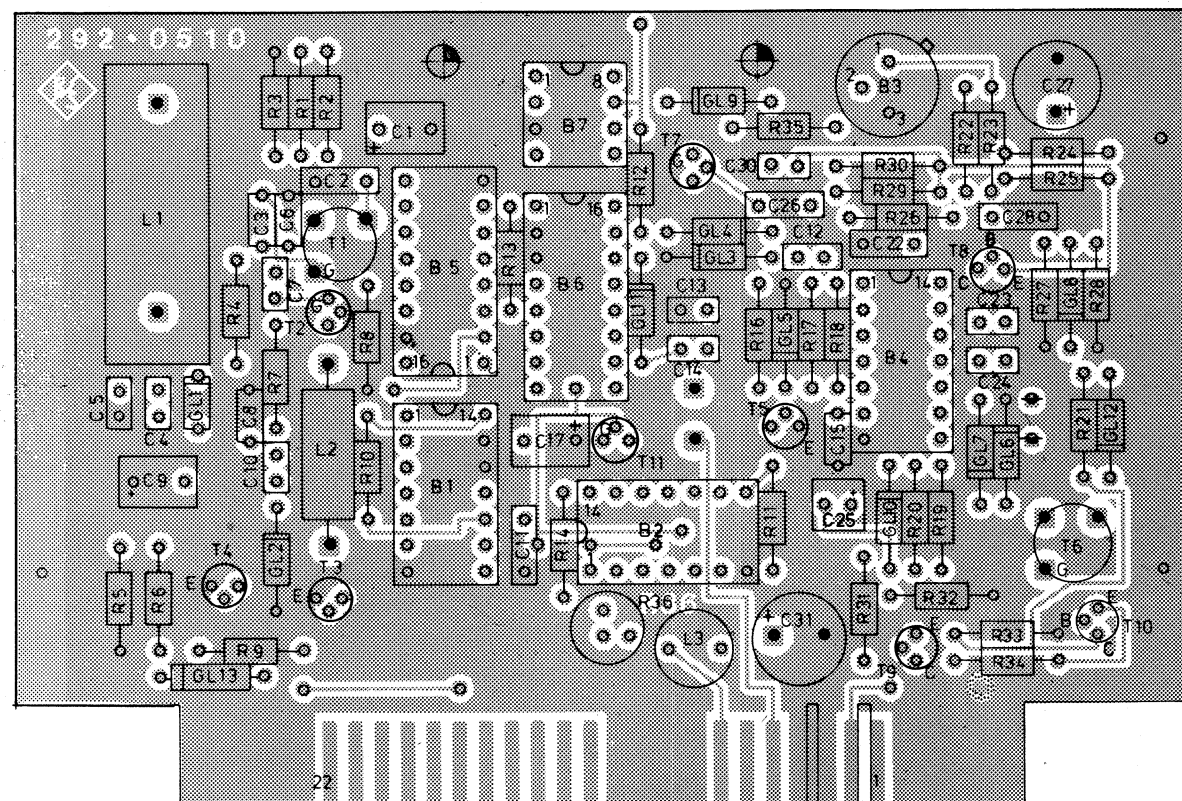
12

13

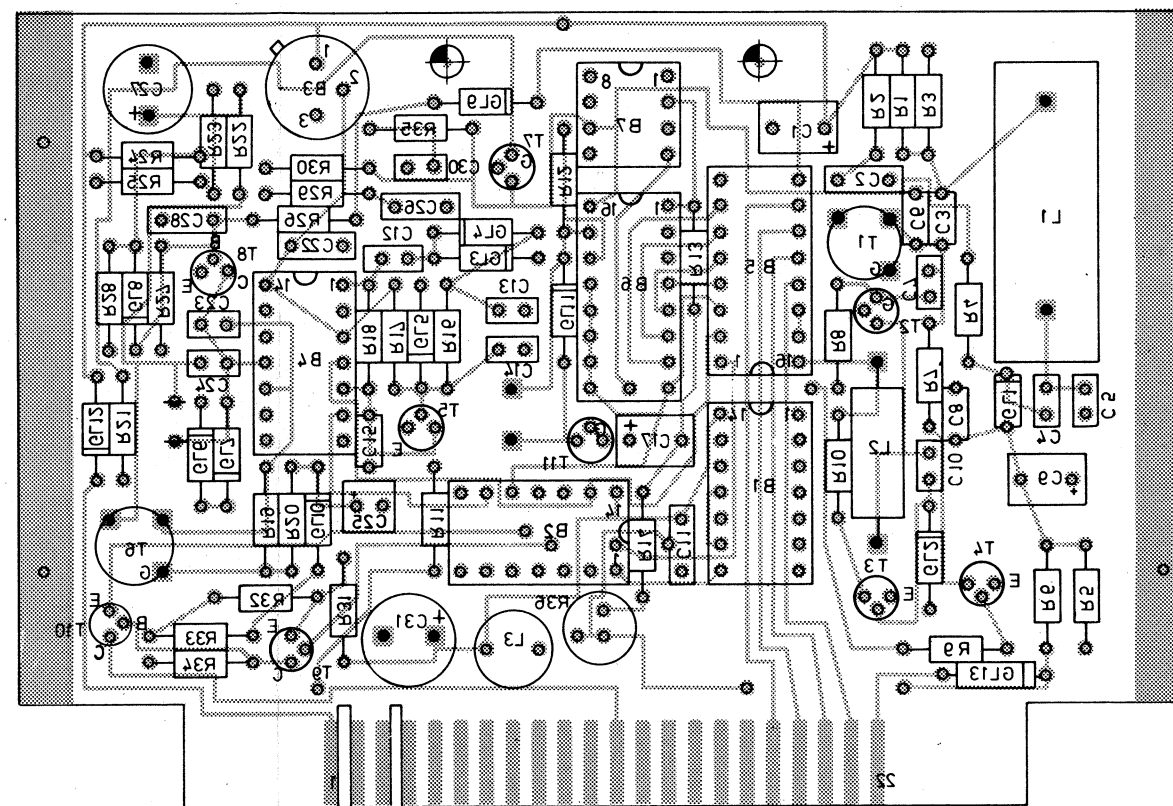
14

15

Ansicht und Leitungsführung Bauteilseite
View of tracks on component side



Ansicht und Leitungsführung Lötseite
View of tracks on solder side



| | | | | | | | | |
|------------|----------------------|-------|------|--------------------------|------------|-------------|-----------|---|
| A | | 16.3 | La | Maße ohne Toleranzangabe | Maßstab | | | |
| B | | 24.58 | Li | | | | | |
| | | | | IGME | Tag | Name | Benennung | Z |
| | | | | Bearb. | 16.3.78 | Wm/La | | |
| | | | | Gepr. | | | | |
| | | | | Norm | | | | |
| | | | | | | Zeichn.-Nr. | Blatt-Nr. | |
| | | | | Zu Gerät ZPV-E 2 | | 292.0510 | | 2 |
| And. Zust. | Anderungs-Mitteilung | Tag | Name | reg. v. | 292.0010 V | erste z. | 292.0010 | |